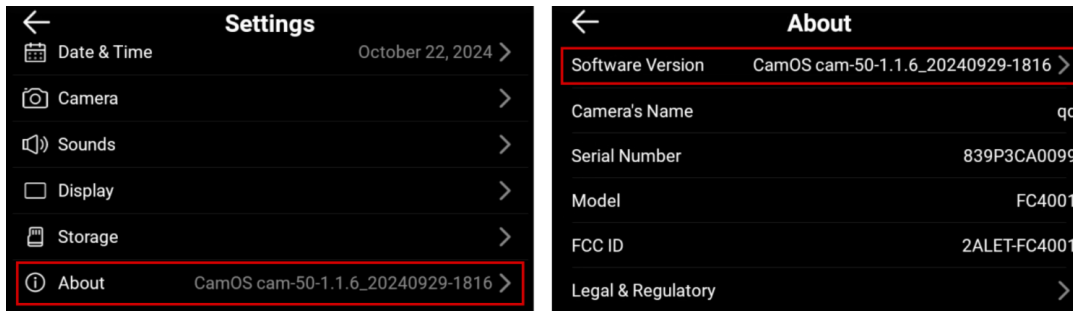


SD card not supported due to Cam50 only support FAT32 format.

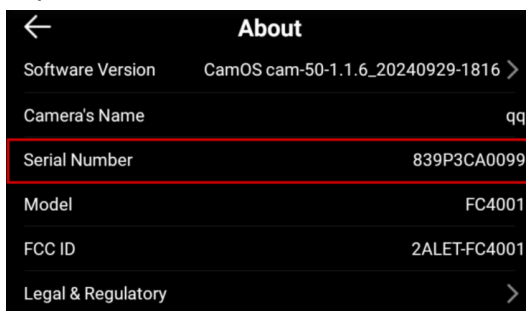
Below steps applicable for version 1.1.4/1.1.6 only:

IMPORTANT: Backup your SD card, below steps will Erase & Format the SD card.

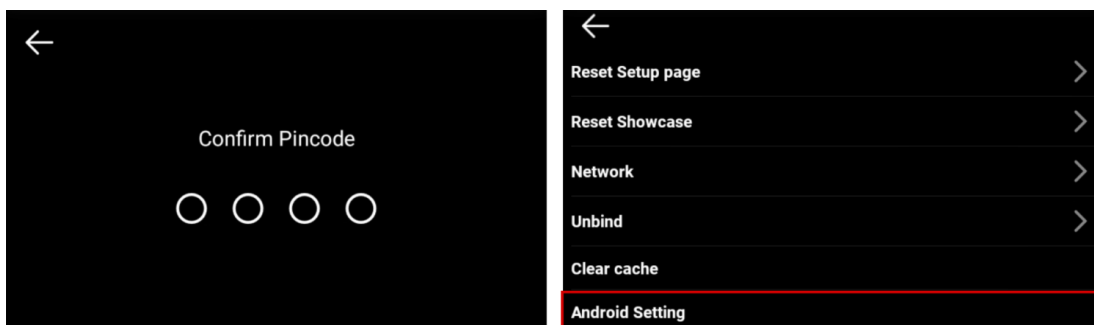
1. Mount the SD card into Camera50
2. Identify the version that you are using 1st (Settings > About > Software Version)



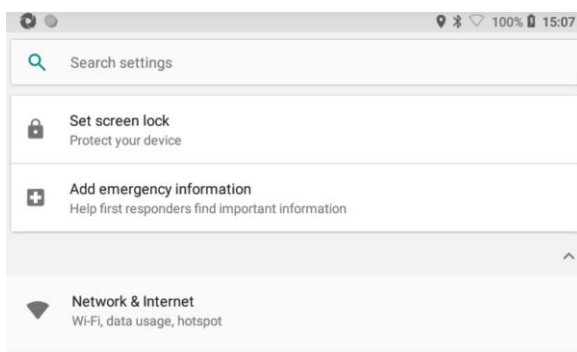
3. Tap Serial Number few times under About page



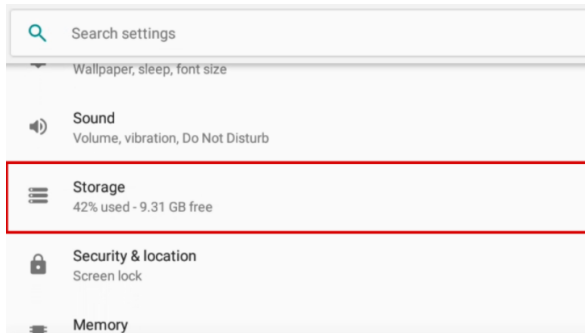
In version 1.1.6: Enter pin “**3363**” and choose “Android Setting”



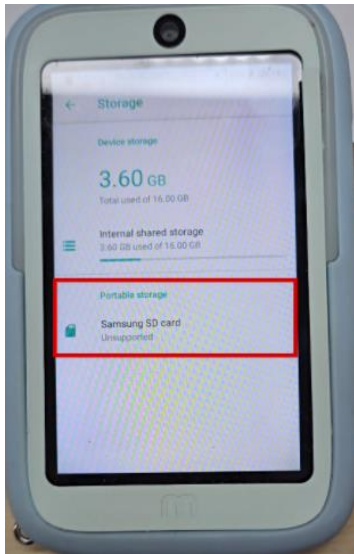
In version 1.1.4: Android setting opened immediately



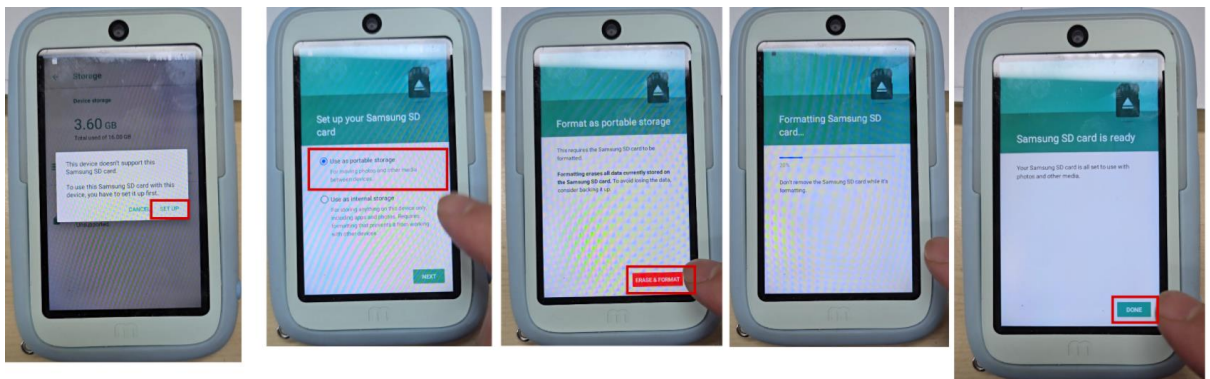
4. Select “Storage” in Android Settings



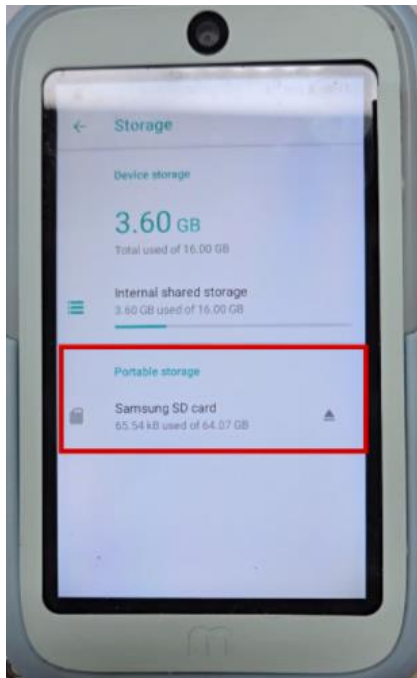
5. Check the storage under “Portable storage”



6. Click the mounter SD card name > Tap “Setup” > Choose “Use as portable storage” > Tap “Next” > Tap “Erase & Format” > Wait until SD card is ready > Tap Done



7. SD card now being supported



8. Restart Camera50 to exit from Android Setting